

# CERTIFICATE OF LOCATION OF GOVERNMENT CORNER

CENTER \_\_\_\_\_ Corner of Section 9, Township 108, Range 42, 5TH P.M.

STATE OF MINNESOTA, County of MURRAY

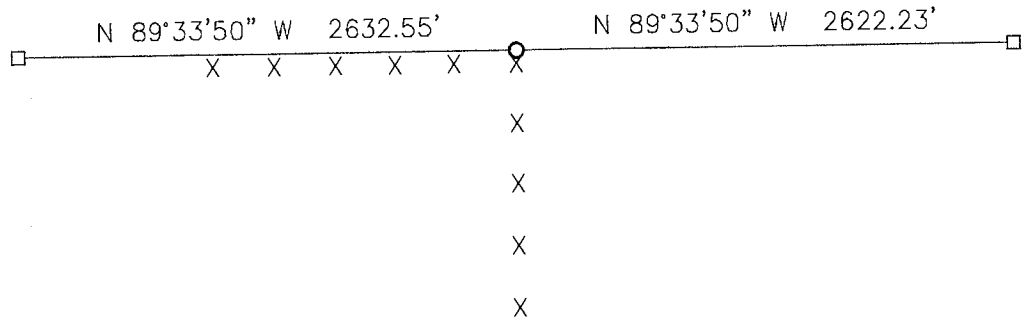
At the corner location shown on the sketch:

On 12-06-2012 found a field stone.  
DATE

left monument as found,  lowered monument,  removed monument (explain)

On \_\_\_\_\_ placed a \_\_\_\_\_  
DATE

### SKETCH OF REFERENCE TIES



Minnesota State Plane Coordinate  
System Murray County Datum  
NAD83 (1996)

N: 219105.357  
E: 466682.459

Statement of evidence relative to this corner location is on back of page.

I hereby certify that this document and the data contained herein was prepared by me or under my direct supervision.

*David Burk* 2/22/13  
SIGNATURE DATE

Registration No. 43844

- Land Surveyor,  Professional Engineer
- County Surveyor,  County Engineer

OFFICE OF THE COUNTY RECORDER  
County of \_\_\_\_\_

I hereby certify that this document was filed in the Co. Recorders office at \_\_\_\_\_ .M on the MAY 23 2013 day of \_\_\_\_\_ A.D. 20 \_\_\_\_\_

County Recorder *James V. Johnson*  
By \_\_\_\_\_, Deputy

DOCUMENT NO. \_\_\_\_\_

## Statement of Evidence

In 1861, L. G. W. Fletcher did the original subdivision of the township.

In 1957, a 6"X6"X36" stone was set at the corner.

On December 6, 2012, Bueltel-Moseng Land Surveying found a field stone at the center of Section 9-108-42. We drilled a small hole in the center of the stone and painted it. The stone is 1' north of the corner fence post.